

1. Front Door Dropped

The front door has dropped from its hinge so needs lifting to close.

2. Front Door Hinge

The cover/cap keeps coming away from the hinge:



3. Dining table window

The left latch fell off the first weekend:



4. Door Latches Generally

Many have become very loose.

5. Half Height Kitchen Wall Lounge Size

Small nick in the wall:



6. Kitchen Sink Fixing Not Fixed - Leaks

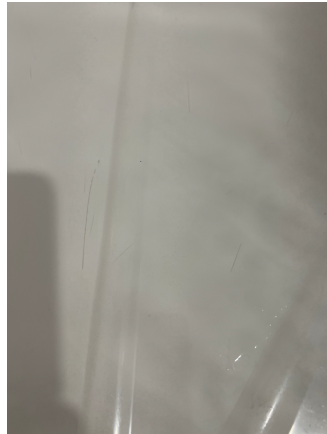
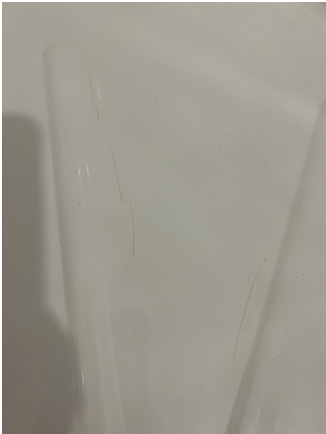


7. Top Kitchen Sink Draw

Doesn't soft close - noticed by your delivery inspection guy.

8. Shower Floor Scratched

Scratches on shower floor showed as soon as Devon soil washed into them:



9. Bathroom Window

Bottom corner fixing keeps falling away:





10. Bedroom Toilet Seat

Mark on top of bedroom toilet seat:



11. Kitchen Cooker Hood Flu Doesn't Sit Flush Into Hood (not sure if it should)



12. Cooker Hood Flu Has Lots Of Blue Plastic Around It



13. Front Door Mat  
Corner of matting missing:



14. Front & Rear Guttering Missing Each End Left Side As You Look At The Front.



15. Holes In Left Side Wall Near Front Side Window As You Look At Caravan:



16. Front Left Window As You Look At It

Putty around sides of window:



17. Fridge Freezer Doors (And Other Cupboard Doors)

Marks on edges of doors:



18. Bathroom Fan Isolator Turns Off Bathroom Light Too, Not Just The Fan.

19. Small Bedroom Does Not Click Shut Without Force

20. Lounge/Kitchen Carpet Divide Is Lifted In The Middle



21. Dining Room Window Frame Peeling Outside



Other Points Of Note:

22. Main Bed Mattress Is Very Bouncy - Like A Water Bed So If One Person Moves So Does The Other

23. The Bedroom Toilet Sink Is So Small It's Virtually Unusable.

It is so small you cannot put your face in it to wash or to rinse your teeth yet there is room for a bigger one.

**3rd October 2022**

**24. Corner sofa until - the very corner seat is sagging a lot.**

**25. Bedroom toilet cistern - flush button lose.**

**26. Front door locking mechanism - can be very stiff/tricky to lock or open.**